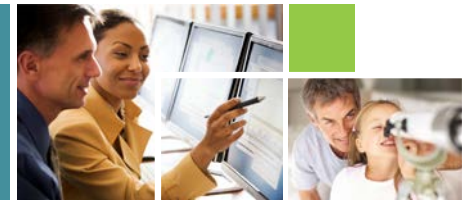


# Michael Geary



Michael Geary is the Managing Partner of Penn Mutual/Sterling Wealth Strategies, with locations in San Diego, Las Vegas and Honolulu.

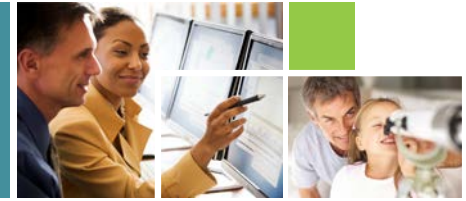
Since becoming the founder of Sterling Wealth Strategies, an agency of Penn Mutual, in 2012, Michael's primary responsibility has been to grow the firm through strategic teaming and business partnerships, with the goal of becoming the premier resource in wealth preservation and accumulation in Southern California, Nevada and Hawaii.

Sterling Wealth Strategies is a comprehensive financial services firm committed to helping our clients improve their long-term financial success, utilizing a holistic, strategic approach.

# The **F** Word(s)

June 2015

# The 1<sup>st</sup> F

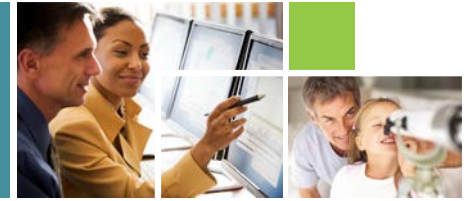


## FAITH

Not “organized religion,” but the belief in  
“something bigger,” or a larger cause



# The 2<sup>nd</sup> F



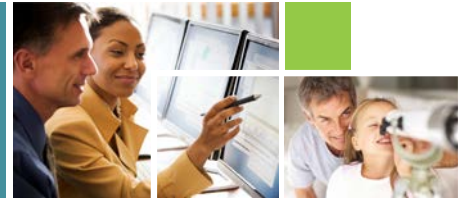
## FAMILY

The reason we do what we do

Our support systems



# The 3<sup>rd</sup> F

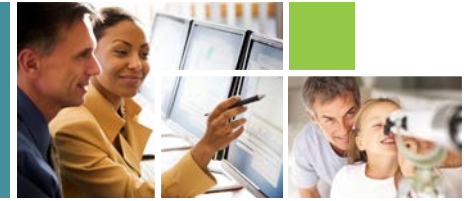


## FRIENDSHIPS

Life is a journey, not a destination



# The 4<sup>th</sup> F



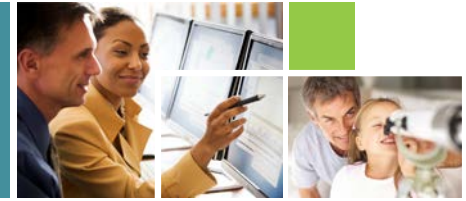
## FITNESS

Building the physical and mental strength  
to deal with what comes at you in life

The first  
wealth is  
health.

Ralph Waldo Emerson  
Ralph Waldo Emerson

# The 5<sup>th</sup> F



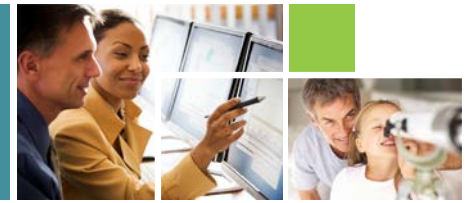
## FINANCES

The freedom to do what you want,  
when you want





# The Final F



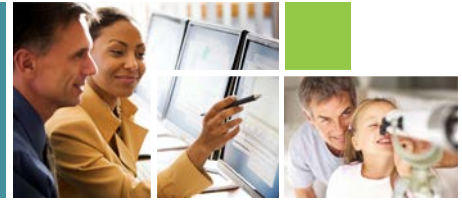
## FOOTBALL

Go Chargers!





# Thank You



**Michael Geary**  
Sterling Wealth Strategies/Penn Mutual  
San Diego, CA

